



Machine Reference nr.: U24260

TWO ROLLS STRAIGHTENING MACHINE KIESERLING WRPB-95

| | |
|------------------------|---|
| Manufacturer | KIESERLING |
| Model | WRPH-95 |
| Year | 1974 |
| Working range | Ø 15 – 125 mm. with material 300/350 N/mm ² yield strength Ø 15 – 82 mm. with material 1000/1250 N/mm ² yield strength |
| Speed | Up to 30 mt./min. |
| Handling tables length | 6 mt. |
| Roller dimension | Ø 300 x 530 mm. |
| Motor power | 2 x 55 kW a.c. |
| Tension | 500 V. – 50 Hz. |

COMPOSITION OF THE LINE

Feeding channel

Feeding pinch-roll

Straightening machine

Exit pinch-roll

Exit channel

Hydraulic unit

N.2 Gearbox + motor

Rollers transmission shafts

Original electric equipment

Drawings and spare parts available

Various spare rollers

-Note. The machine is equipped with the hydraulic cushioning system



ALESSANDROSTELLA



ENGEN SRL

Italy - 33044 Manzano - Via G.Galilei,8 - Phone +39 0432 740366 - info@engemeccanica.com - www.engemeccanica.com
C. F. / P. IVA / Reg. Impr. UD IT 02525280307 - Cap. Soc. € 117.640,00 i.v. - R.E.A. Udine 267897

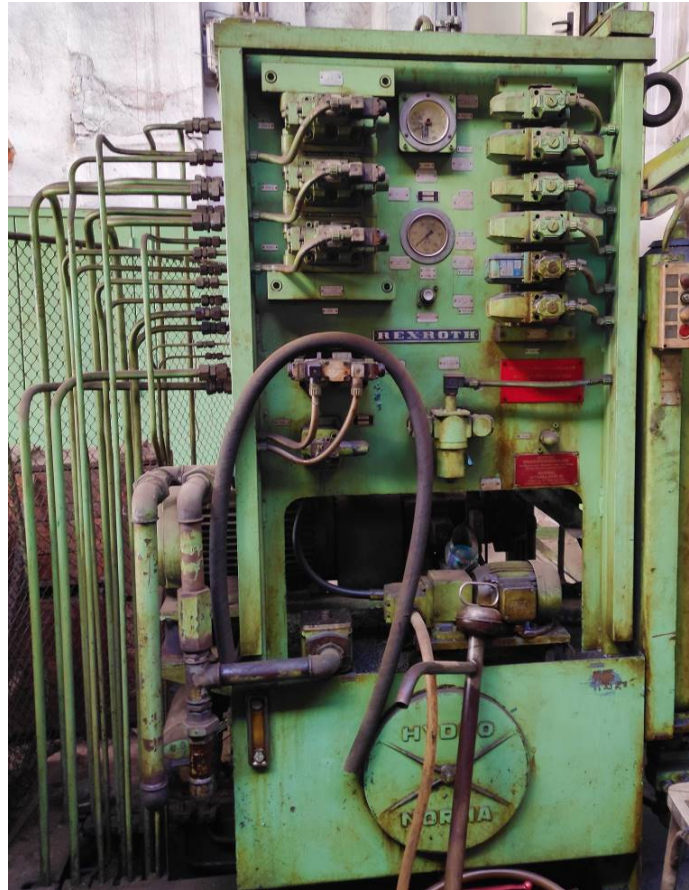


ALESSANDROSTELLA



ENGEN SRL

Italy - 33044 Manzano - Via G.Galilei,8 - Phone +39 0432 740366 - info@engemeccanica.com - www.engenmeccanica.com
C. F. / P. IVA / Reg. Impr. UD IT 02525280307 - Cap. Soc. € 117.640,00 i.v. - R.E.A. Udine 267897



Available versions
Three series are available to meet all requirements.

KIESERLING

Main technical data:

| Machine Size | Diameter Range from ... to mm | Maximum Bar Diameter at a yield strength of | | | Straightening Speeds (standard) m/min |
|--------------|-------------------------------------|--|--------------------------------|----------------------------------|---|
| | | 300...350 N/mm ² | 700...750 N/mm ² | 1100...1200 N/mm ² | |
| WRPF 20/ 30 | 4... 32 | 30 | 24 | 20 | 24 |
| WRPF 35/ 50 | 6... 50 | 50 | 38 | 32 | 22,5 |
| WRPF 50/ 75 | 9... 75 | 75 | 57 | 48 | 22 |
| WRP 80 | 10... 80 | 80 | 68 | 56 | 8,4... 43,2 |
| WRP 100 | 12... 100 | 100 | 82 | 70 | 7,5... 38,0 |
| WRP 120 | 15... 120 | 120 | 97 | 82 | 6,3... 32,0 |
| WRPH 35/ 50 | 6... 50 | 50 | 38 | 32 | 9... 46,0 |
| WRPH 50/ 75 | 9... 75 | 75 | 57 | 48 | 8,4... 42,7 |
| WRPH 65/ 90 | 10... 90 | 90 | 68 | 56 | 8,4... 43,2 |
| WRPH 80/110 | 12... 110 | 110 | 82 | 70 | 7,5... 38,0 |
| WRPH 95/125 | 15... 125 | 125 | 97 | 82 | 6,3... 32,0 |
| WRPH 110/150 | 18... 150 | 150 | 112 | 96 | 5,6... 28,8 |
| WRPH 130/175 | 22... 175 | 175 | 130 | 109 | 5,7... 25,9 |
| WRPH 150/200 | 25... 200 | 200 | 152 | 128 | 4,3... 20,0 |
| WRPH 180/245 | 30... 245 | 245 | 187 | 155 | 3,5... 17,9 |
| WRPH 230/300 | 40... 300 | 300 | 227 | 190 | 3,1... 15,4 |

All models and versions can be individually adapted to meet the technical production requirements. They can be readily combined with other manufacturing lines or be incorporated into existing systems.

This picture shows a WDHV 100 turning machine and a WRPH 130 two-roll straightening and polishing machine combined with a chain cross transport.